

DARLINGTON STATION

COMMUNITIES AND LOCAL SERVICES SCRUTINY

22 OCTOBER 2020



Tees Valley Strategic Transport Plan:

The aspiration is to deliver a high-quality integrated rail network across the Tees Valley that facilitates passenger & freight growth.



Tees Valley Rail Network



- To unlock the capacity constraints work is required across the network.
- Major improvements at Darlington and Middlesbrough Stations form the building blocks of improving the Tees Valley rail network.



Project Objectives

- Transform Darlington Train Station into a modern transport hub.
- More frequent and faster local and national services and futureproof the station for the future needs of the railway.
- Support and enhance the wider Darlington Regeneration initiatives



Darlington Station – Links to wider Regeneration Strategies



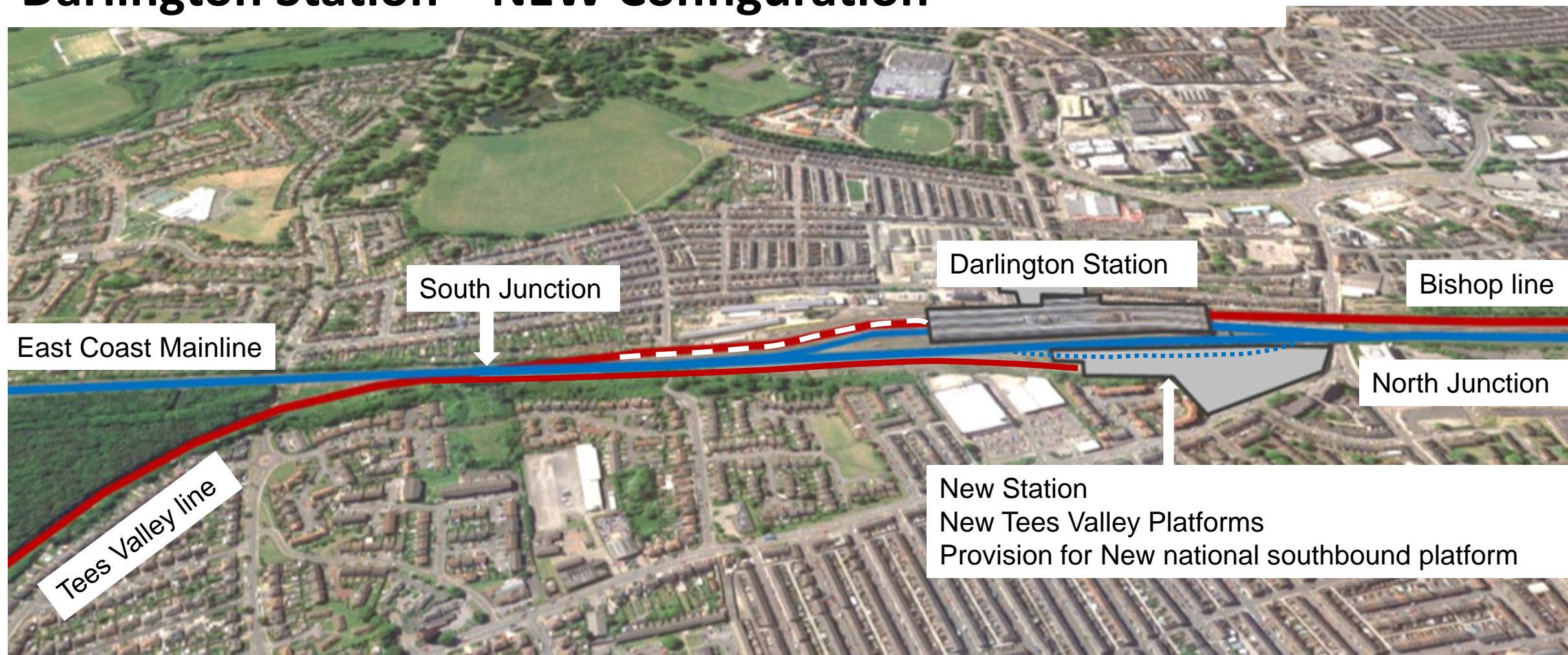
- Key component of Darlington Regeneration Plans
- Tees Valley's only ECML station (and potential future NPR and HS2 station) – a passenger experience representative of the economic ambitions of the Borough and the wider Tees Valley Region



Darlington Station – Configuration & Capacity



Darlington Station – NEW Configuration



- Ability to increase train frequency on both Tees Valley and Bishop line.
- Improved reliability and journey times for local services no longer been restricted access across ECML.
- Better connections & high quality, integrated local services
- Darlington and Tees Valley ready to benefit from future railway growth.
- Contributing to unlocking capacity between York & Newcastle

Darlington Station Project Delivery

Elements of the scheme:

Operational Railway – the track improvements and new east side platforms.

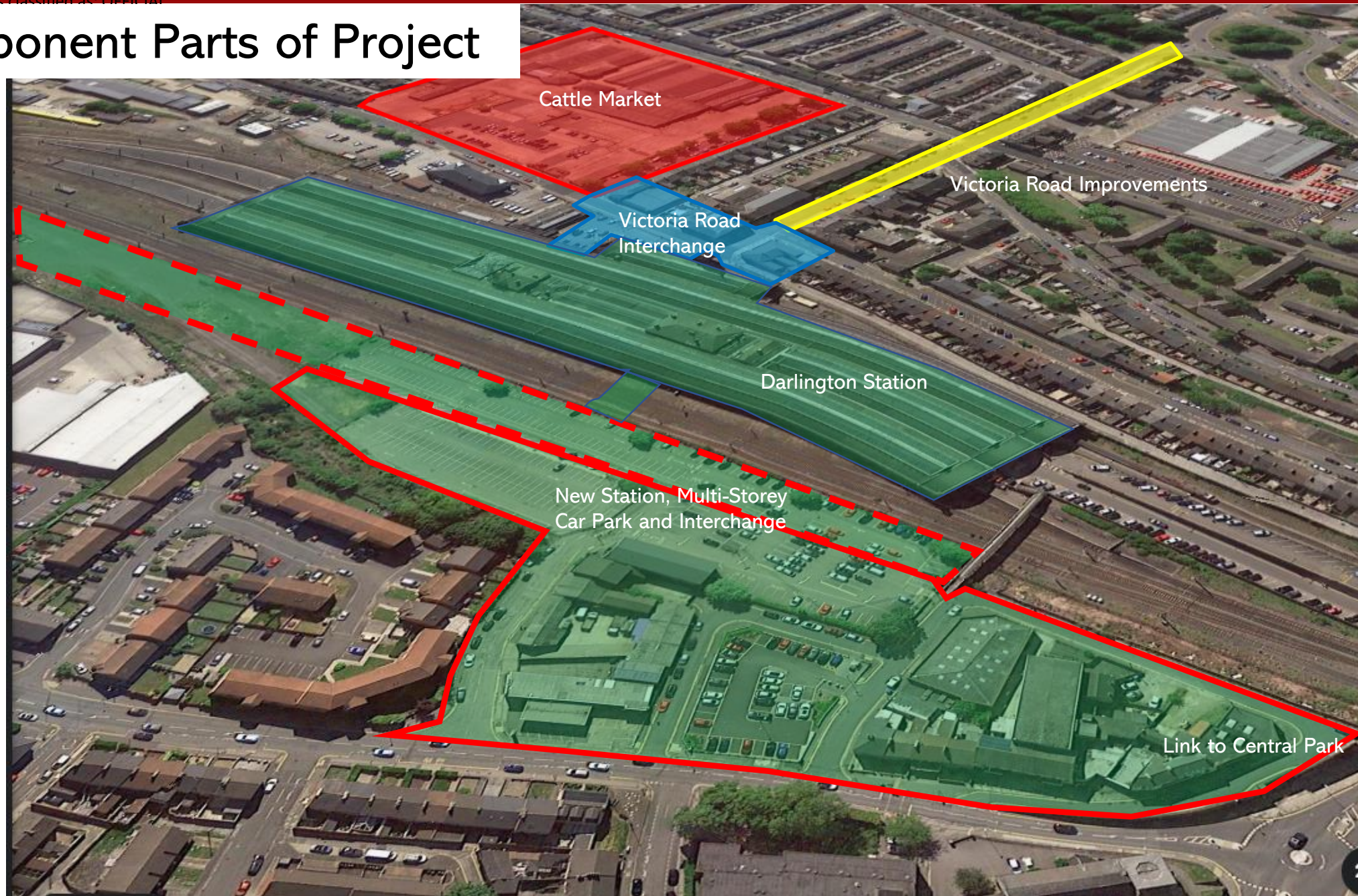
Station Enhancements – the new station building and accessible footbridge, together with any internal changes to the existing station required.

Station Gateways – new MSCP and multi-modal interchange to the east, the enhancement to the portico and improved interchange to the west.

Target date for completion of all elements: end of 2024



Component Parts of Project



Station East



Key features

- New Station building including modern facilities and retail
- New Local Platforms for Tees Valley Services
- Provision for new National London bound high speed platform
- New Bridge from new station to existing station
- New Multi-Storey Car Park
- New Transport Interchange including pick-up and drop-off.
- Improved cycling and walking facilities.
- Pedestrian Bridge to Central Park - **Delivered**



Darlington Station



Key features

- Portico Improvements
- Access for all enhancements
- Customer experience Enhancements
- Improvements to subway from improved portico.
- Rationalisation of Parking and Access. (including ramp may be limited to staff access and taxi)
- Bridge to station east from within the station.

Transport Interchange – Victoria Road



Key features

- Improved pedestrian space within portico and outside portico
- New pick-up and drop off
- New bus stop facilities.
- Improved walking and cycling facilities
- Improved public realm to link to Victoria Road Scheme and town centre.
- Improved link to Cattle Market Site.





Department
for Transport

DELIVERY



TEES VALLEY MAYOR



Station Gateway

Design & Build Contract – SCAPE Framework
£25m allocated from TVCA to be committed by
Mar 2023.



Operational Rail & Station Enhancements

Network Rail & BAM Nuttall Ltd
Up to £8.7m allocated by DfT for Design Stages

Current Indicative Milestones & Target Dates

Start CPO	January 2021	Decision to deliver	Sep 2021
Planning Permissions	Spring 2021	Complete Design	June 2022
Construction	Winter 2022	Construction Start	Jan 2023
MSCP operational	March 2024	Complete Construction	May 2024
		New track & station operational	Dec 2024



Integrated Project Management Team & Governance
with TVCA, DfT, Network Rail, LNER and Northern



Shared Planning Opportunities & Constraints



What might the new station look like ?

Early indicative concept - For illustrative purposes only



END

